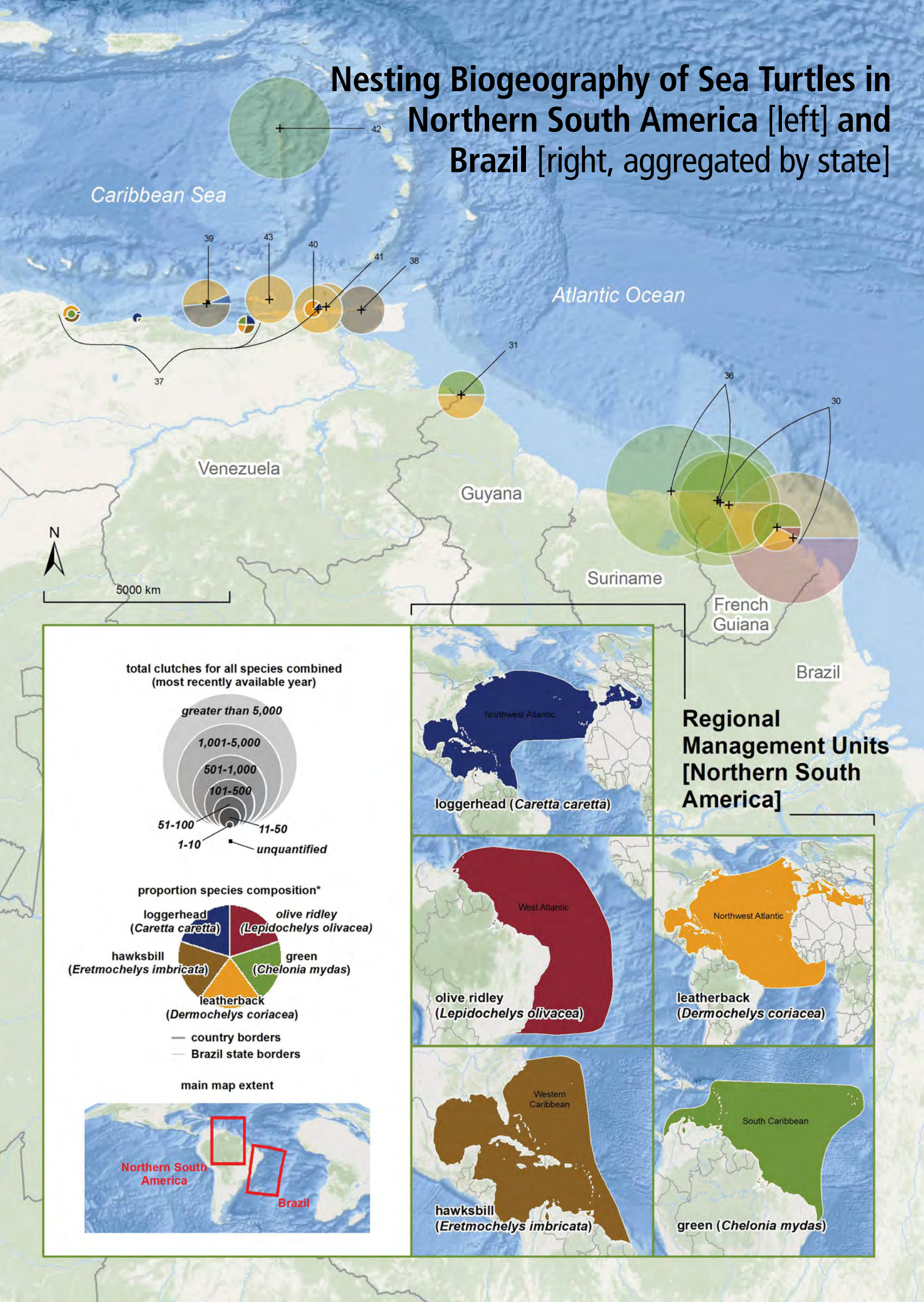
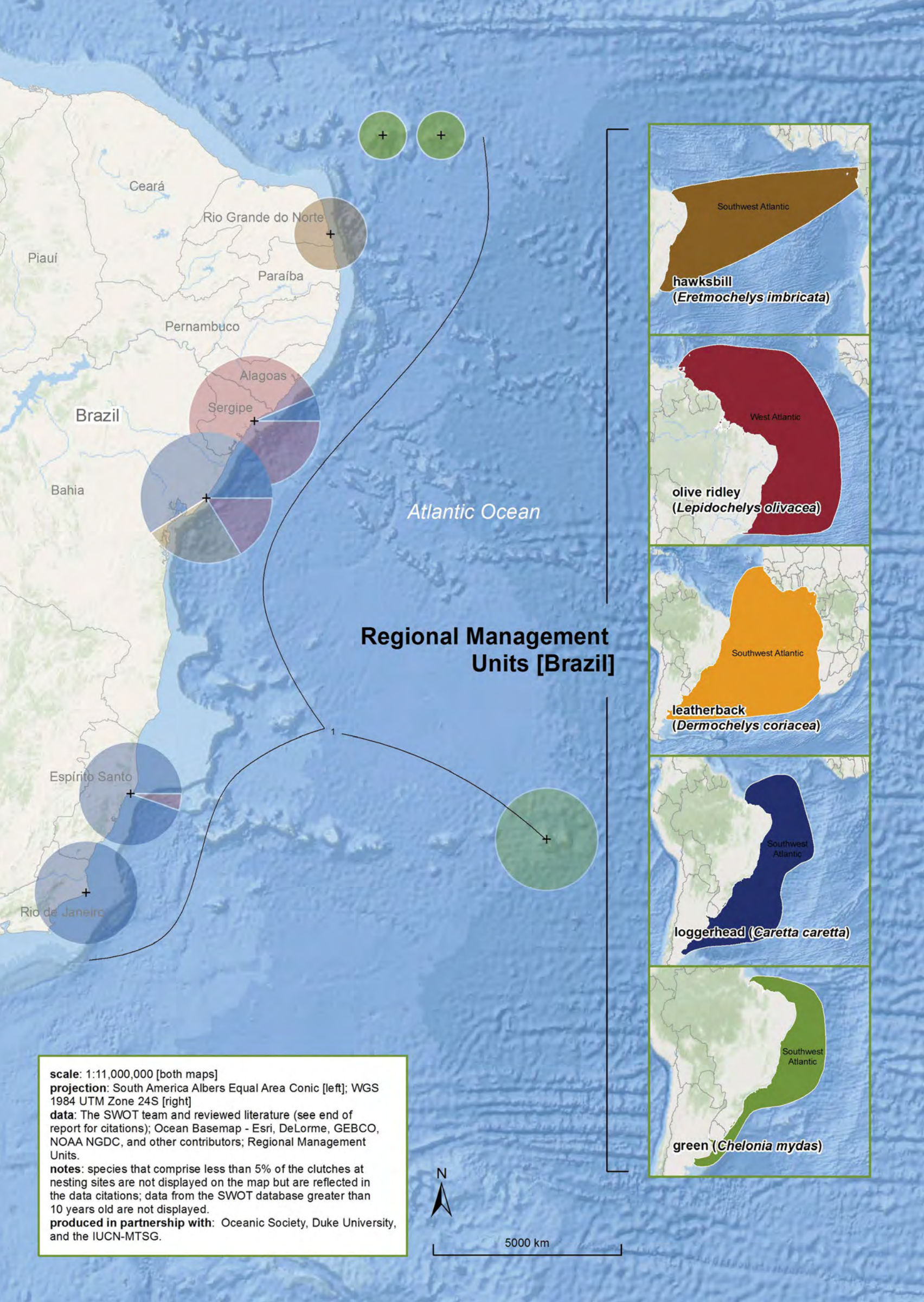


Nesting Biogeography of Sea Turtles in Northern South America [left] and Brazil [right, aggregated by state]



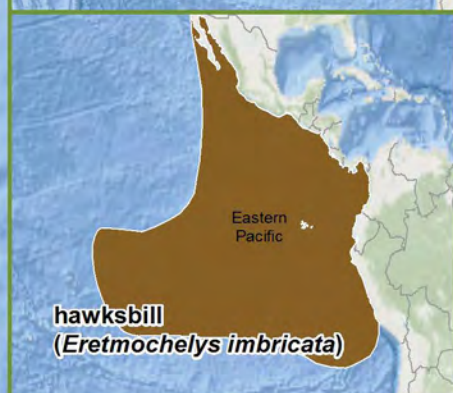


scale: 1:5,250,000 [left]; 1:3,500,000 [right]
projection: UTM Zone 17 South WGS84 [left]; Colombia West Zone [right]
data: The SWOT team and reviewed literature (see end of report for citations); Ocean Basemap - Esri, DeLorme, GEBCO, NOAA NGDC, and other contributors; Regional Management Units.
notes: species that comprise less than 5% of the clutches at nesting sites are not displayed on the map but are reflected in the data citations; data from the SWOT database greater than 10 years old are not displayed.
produced in partnership with: Oceanic Society, Duke University, and the IUCN-MTSG.

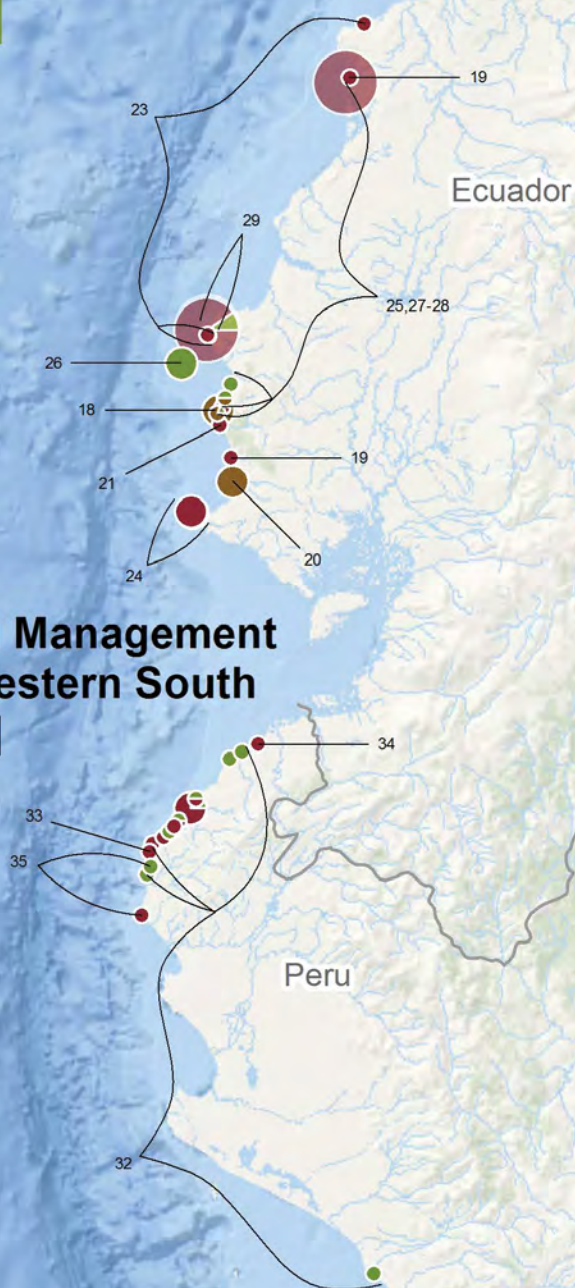
Galápagos Islands



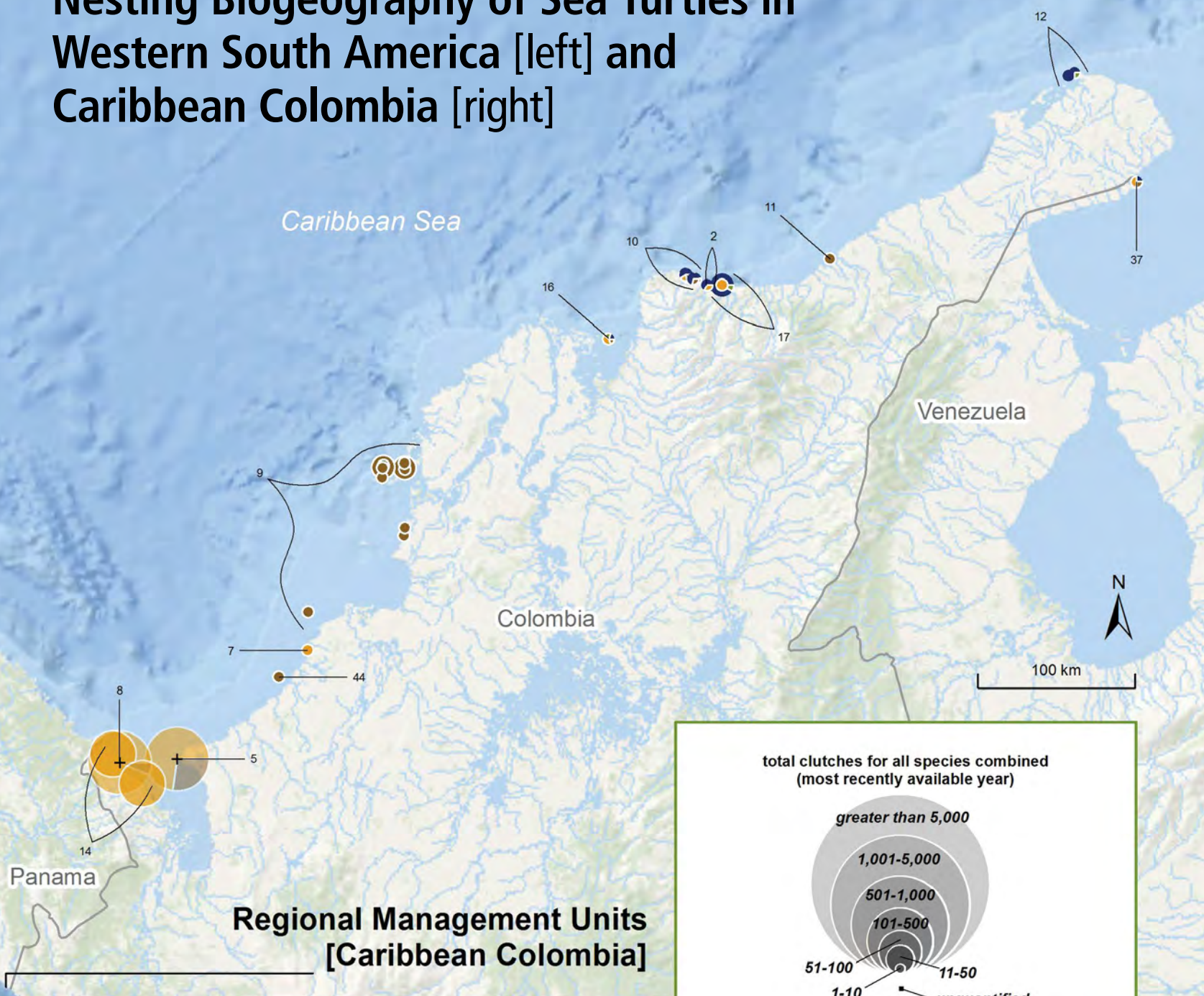
200 km



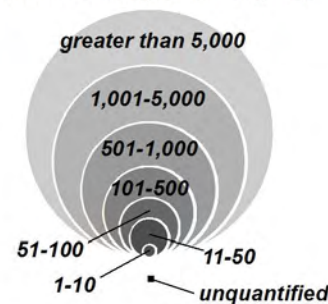
Regional Management Units [Western South America]



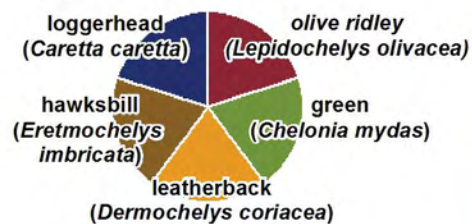
Nesting Biogeography of Sea Turtles in Western South America [left] and Caribbean Colombia [right]



total clutches for all species combined
(most recently available year)



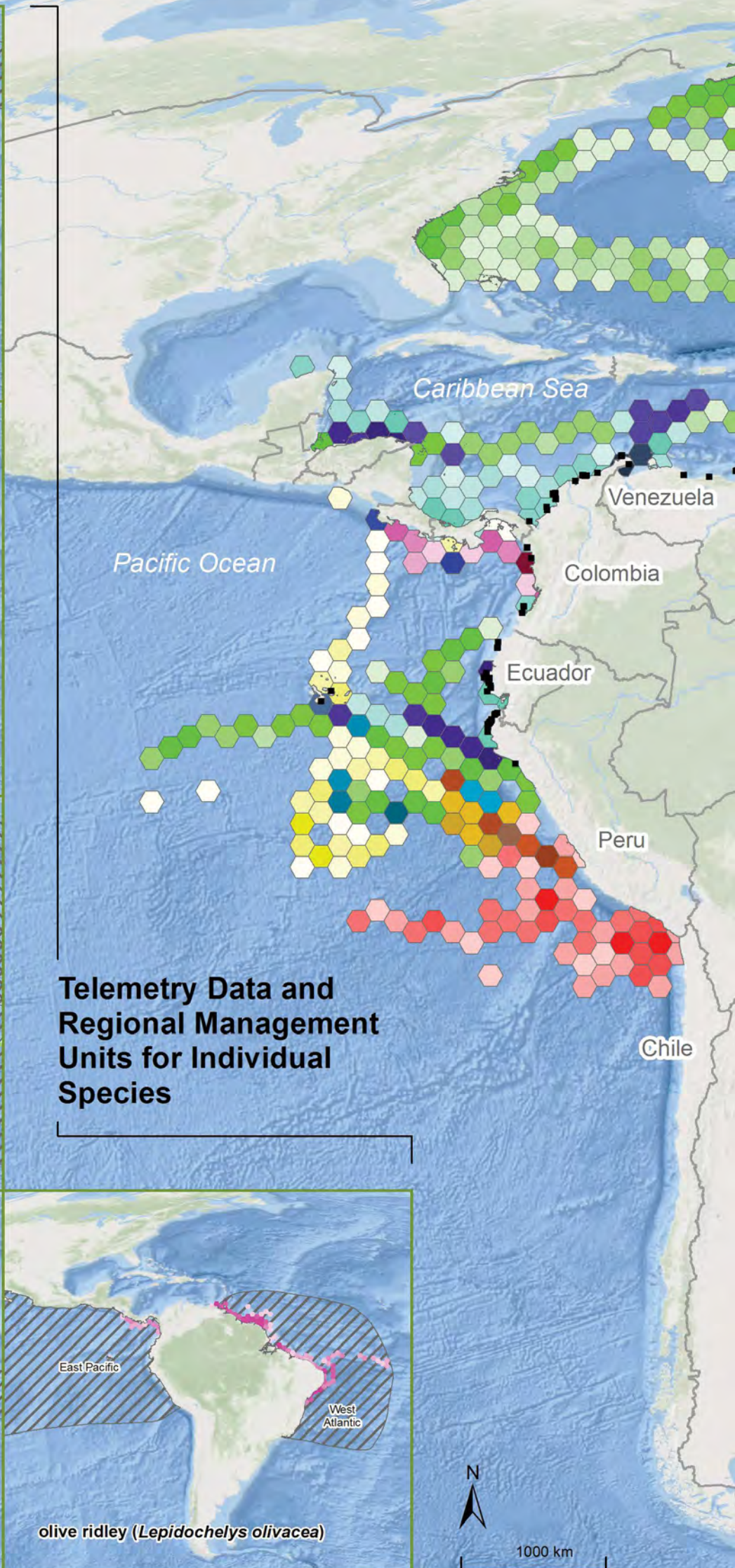
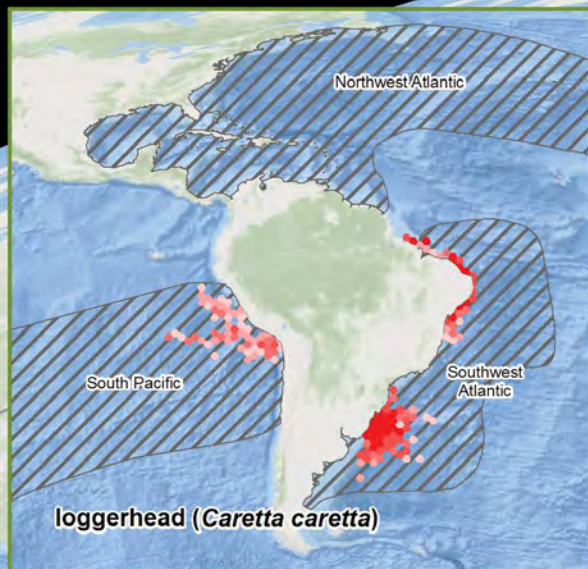
proportion species composition*



— country borders

main map extents





Telemetry Data and Regional Management Units for Individual Species

Sea Turtle Satellite Telemetry Data Originating in South America

